



Cabin with surrounding lawn and gardens

Canoeing is on hand at the private river of Big Bend Farm. A canoe is available at no extra charge. Horseback riding trails are accessible. There is also access to fishing and hunting at an additional charge. Clay shooting can be arranged. Call for rates and more information.

Your Accommodations

Your dream vacation in the mountains could be awaiting you at Big Bend Farm.

Your first impulse when you arrive will probably be to flop down on the porch overlooking the meadows and the sparkling river with mountains just beyond.

If your aim is to settle in for an undisturbed period of rest and isolation, you shall have it. On the other hand, should you wish to observe the daily activities of a working farm, you'll be welcome to watch us making hay, building fences or checking on the livestock.

In the summer the river is available for a refreshing swim, and its fish population includes small-mouth black bass, red eyes, sun perch, and pike. A riverside evening cookout beneath a starlit sky provides an ideal setting for a family sing song. Hiking along the fields and woodland paths you will often have glimpses of deer, fox and wild turkey. Herons, ducks, and bald eagles are occasionally sighted along the river, as well as noisy flocks of Canadian geese.

If you want a break from using our fully-equipped kitchen and outdoor grill, eating out presents a range of possibilities from a 5-star menu at the Homestead resort just 30 minutes away, to nearby fast food.



Pristine Cowpasture River flowing through property available for guest recreation

History

The house was built in 1928 by the owners' grandfather, using numerous materials from the property and creating an ideal vacation home. The chimney for the large fireplace is of stone from the river. The floors are of local black walnut, as is the paneling in the living room. Decorative pine tree tops are uniquely suspended within the vaulted ceiling of the living room.



Cozy Living Room with full Library

The house sleeps 11 people. The master bedroom holds a queen size bed and also has a private bath. In addition, there is also a sitting area with Satellite T.V. and VCR. The other downstairs bedroom has a single bed with private 1/2 bath. The two upstairs sleeping quarters each contain four single beds. There is also a full bath upstairs. An adjacent sleeping cabin accommodates two more guests for an additional \$50 per occasion.

For a three-day, two-night stay, the charge is \$399.00 for double occupancy and each additional person is \$10 per night. Infants are free. A three-night stay is \$499.00.



Open Fire Place

A four-night stay is \$599.00. A five night stay is \$699.00. Six nights \$779.00. We do not accept credit cards.

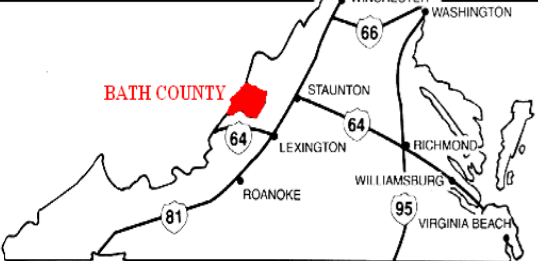
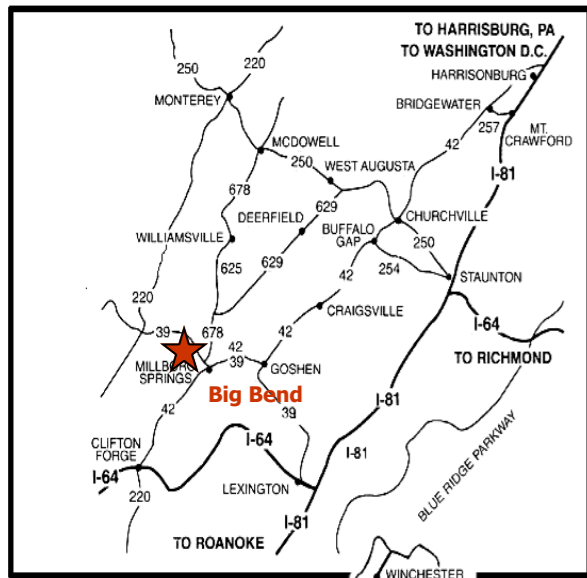
No ATV's permitted. House pets are allowed for an additional \$20 each, per occasion. Pets must be kept under their owner's control at all times.

Pasture for horses is available at \$15 per day. Unlimited firewood is provided. All linens and towels are included. A deposit of half the double occupancy rate is required to make a secure reservation. Our facilities are open year around. Prices subject to change

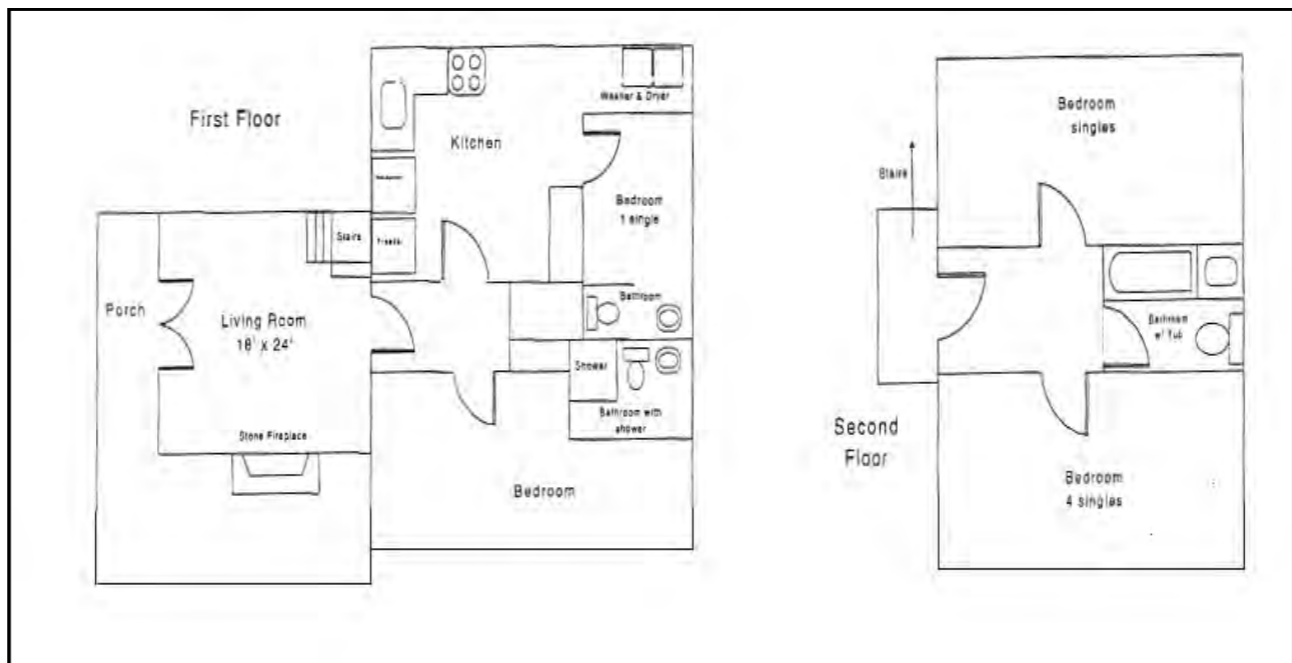
Reservations or questions will gladly be handled by calling 540-997-5661 or e-mailing us at bigbendfarm@hughes.net Please indicate Cabin in the subject heading.



Partial View of Master Bedroom



Cabin showing fully furnished porch & flowers in bloom



Barbara Ray
BIG BEND FARM
411 Big Bend Farm Road
Millboro, VA 24460
540-997-5661
bigbendfarm@hughes.net
www.bigbendfarm.com

From the East & North:

From I-64 take the I-81 north exit 87. Take Exit 225 off I-81 Woodrow Wilson Parkway, follow Route 262 to Route 254 west at the Parkersburg Pike Exit. 254 West becomes Route 42 South and adds in Route 39 West in Goshen which all proceeds to Millboro Springs. From the Millboro Springs intersection, stay West on 39 for 1.7 miles. The farm is on the left just before crossing the Cow Pasture River bridge. Look for the Border Collie sign indicating Big Bend Farm.

From the West & South:

I-81 North to Fincastle Exit #158B, proceeding on route 220 north through Clifton Forge picking up I-64 East. From I-64 take the Millboro Springs/ Rt. 42, Exit 29. Take 42 north 16 miles to Millboro Springs. Turn west/left on Route 39 for 1.7 miles. Last step as above.